

MITUTOYO FIXTURES

PRE1403



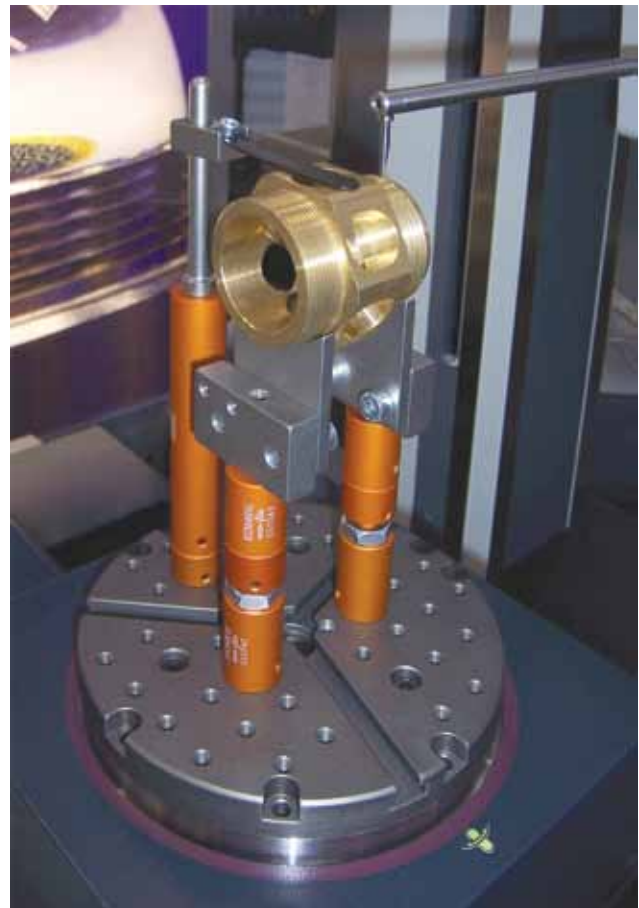
eco-fix, vari-fix and opti-fix

eco-fix Kit Form S



Part No. K551133

Part No.	Qty.	Part name
K551038	1	Adaptor plate ø 150 mm
K551024	1	Location pin ø 12 mm X 13 mm
K551025	1	Location pin ø 12 mm X 25 mm
K551026	1	Location pin ø 12 mm X 50 mm
K551027	1	Location pin ø 12 mm X 100 mm
K551028	1	Location pin ø 20 mm X 13 mm
K551029	1	Location pin ø 20 mm X 25 mm
K551030	1	Location pin ø 20 mm X 50 mm
K551031	1	Location pin ø 20 mm X 100 mm
K551035	1	Receiver bracket small
K551036	1	Receiver bracket large
K551040	1	Adjustable location pin ø 20 mm
K551041	1	Adjustable location pin ø 12 mm
K551042	3	Location pin ø 12 mm with bore ø 6mm
K551044	1	Receiver bracket L = 90; ø 12 mm
K550716	1	Straight pin with thread
K550279	1	Spring clip, d= 8 mm, L = 60 mm
K551069	1	Flat top ø 12 mm
K550262	1	V-block mini
K550261	2	Cone receiver mini
K550250	1	Stopper element mini
K550247	1	Back square mini
K550888	2	Straight pin Ø 6 mm x 20 mm
K550889	2	Straight pin Ø 6 mm x 30 mm
K550890	2	Straight pin Ø 6 mm x 40 mm
K551046	1	Slotted nut for receiver bracket h=12mm
K551050	1	Allen key 2 mm
K551051	1	Allen key 3 mm
K551052	1	Allen key 4 mm
K551053	1	Allen key 5 mm
K551054	1	Double open ended spanner 10-17
K550591	1	Washer ø 6,4 mm / ø 17 mm
K550110	8	Cylinder head screw M6 x 20 mm
K550563	6	Cylinder head screw M6 x 25 mm
	53	



eco-fix Kit Form L



Part No. K551134

Part No.	Qty.	Part name
K551039	1	Adaptor plate ø 200 mm
K551024	1	Location pin ø 12 mm X 13 mm
K551025	1	Location pin ø 12 mm X 25 mm
K551026	1	Location pin ø 12 mm X 50 mm
K551027	2	Location pin ø 12 mm X 100 mm
K551028	2	Location pin ø 20 mm X 13 mm
K551029	2	Location pin ø 20 mm X 25 mm
K551030	2	Location pin ø 20 mm X 50 mm
K551031	1	Location pin ø 20 mm X 100 mm
K551035	1	Receiver bracket small
K551036	1	Receiver bracket large
K551040	2	Adjustable location pin ø 20 mm
K551041	1	Adjustable location pin ø 12 mm
K551042	2	Location pin ø 12 mm with bore ø 6 mm
K551043	3	Location pin ø 20 mm with bore ø 8 mm
K551044	1	Receiver bracket L=90; ø 12 mm
K551045	1	Receiver bracket L=120; ø 20 mm
K550716	2	Straight pin with thread
K550279	2	Spring clip, d= 8 mm, L= 60 mm
K550262	1	V-block mini
K550261	2	Cone receiver mini
K550250	1	Stopper element mini
K550247	1	Back square mini
K550058	1	V-block
K550365	2	Cone receiver
K550982	1	Stopper element
K550248	1	Back square
K550888	2	Straight pin Ø 6 mm x 20 mm
K550889	2	Straight pin Ø 6 mm x 30 mm
K550890	2	Straight pin Ø 6 mm x 40 mm
K550000	2	Straight pin Ø 8 mm x 30 mm
K550001	2	Straight pin Ø 8 mm x 50 mm
K550002	2	Straight pin Ø 8 mm x 95 mm
K551046	1	Slotted Nut for receiver bracket h= 12 mm
K551047	1	Slotted Nut for receiver bracket h= 15 mm
K551050	1	Allen key 2 mm
K551051	1	Allen key 3 mm
K551052	1	Allen key 4 mm
K551053	1	Allen key 5 mm
K551054	1	Double open ended spanner 10-17
K550591	1	Washer ø 6.4 mm / ø 17 mm
K550110	12	Cylinder head screw M6 x 20 mm
K550563	6	Cylinder head screw M6 x 25 mm
	82	



eco-fix Kit quick-rail



Part No. K550914

Part No.	Qty.	Part name
K550911	1	Clamping profile rail 800 mm
K550199	2	Clamping profile rail with slot 500 mm
K550908	2	Clamping claw
K550909	2	Corner connector
K550907	3	Clamping plate
K551040	3	Adjustable Location pin \varnothing 20 mm
K551043	3	Location pin \varnothing 20 mm with bore 8 mm
K551030	2	Location pin \varnothing 20 mm x 50 mm
K551029	3	Location pin \varnothing 20 mm x 25 mm
K550279	1	Spring clip, \varnothing 8 mm, L = 60 mm
K550554	1	Spring clip, \varnothing 8 mm, L = 40 mm
K550042	1	Back square 30 mm x 30 mm
K550249	1	Stopper element 30 mm x 25 mm
K550248	1	Back square \varnothing 20 mm
K550982	1	Stopper element \varnothing 20 mm
K551070	1	Flat top \varnothing 20 mm
K550716	1	Straight pin with thread
K551054	1	Double open-ended spanner SW 10/17
K550658	1	Hexagon spanner with t-handle
	31	





MitutoyoShop

Extension Sets



Part No. K551129



Part No. K551130

Receiver brackets 1

Part No.	Qty.	Part name
K551044	3	Receiving bracket L = 90 mm, \varnothing 12 mm
K551035	3	Receiver bracket small L = 40 mm, M6
K551046	3	Slotted nut h = 12 mm
	9	

Receiver brackets 2

Part No.	Qty.	Part name
K551045	3	Receiving bracket L = 120 mm, \varnothing 20 mm
K551036	3	Receiver bracket large L = 70 mm, M6
K551047	3	Slotted nut h = 15 mm
	9	



Part No. K551132



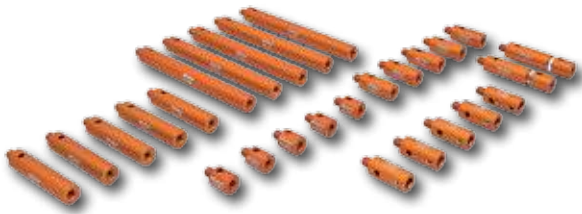
Part No. K551131

Joints 1

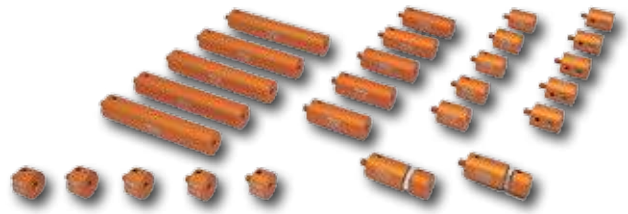
Part No.	Qty.	Part name
K551075	3	Turn-swivel joint \varnothing 12 mm
K551076	3	Turn-swivel joint \varnothing 20 mm
	6	

Magnet 1

Part No.	Qty.	Part name
K551073	5	Magnetic receiver \varnothing 12 mm
K551074	5	Magnetic receiver \varnothing 20 mm
	10	



Part No. K551123



Part No. K551124

Location pins 1

Part No.	Qty.	Part name
K551024	5	Location pin \varnothing 12 mm x 13 mm
K551025	5	Location pin \varnothing 12 mm x 25 mm
K551026	5	Location pin \varnothing 12 mm x 50 mm
K551027	5	Location pin \varnothing 12 mm x 100 mm
K551042	5	Location pin \varnothing 12 mm with hole \varnothing 6 mm
K551041	2	Adjustable location pin \varnothing 12 mm
	27	

Location pins 2

Part No.	Qty.	Part name
K551028	5	Location pin \varnothing 20 mm x 13 mm
K551029	5	Location pin \varnothing 20 mm x 25 mm
K551030	5	Location pin \varnothing 20 mm x 50 mm
K551031	5	Location pin \varnothing 20 mm x 100 mm
K551043	5	Location pin \varnothing 20mm with hole \varnothing 8 mm
K551040	2	Adjustable location pin \varnothing 20 mm
	27	



Part No. K551126



Part No. K551127

Supporting elements 1

Part No.	Qty.	Part name
K551069	3	Flat top \varnothing 12 mm
K550250	3	Stopper element mini \varnothing 12 mm
K550247	2	Back square mini \varnothing 12 mm
K550262	2	V-block mini \varnothing 12 mm
K551071	5	Sphere top \varnothing 12 mm
K550261	2	Cone receiver mini \varnothing 12 mm
	17	

Supporting elements 2

Part No.	Qty.	Part name
K551070	3	Flat top \varnothing 20 mm
K550982	3	Stopper element \varnothing 20 mm
K550248	2	Back square \varnothing 20 mm
K550058	2	V-block \varnothing 20 mm
K551072	5	Sphere top \varnothing 20 mm
K550365	2	Cone receiver \varnothing 20 mm
	17	

Extension sets



Part No. K551125



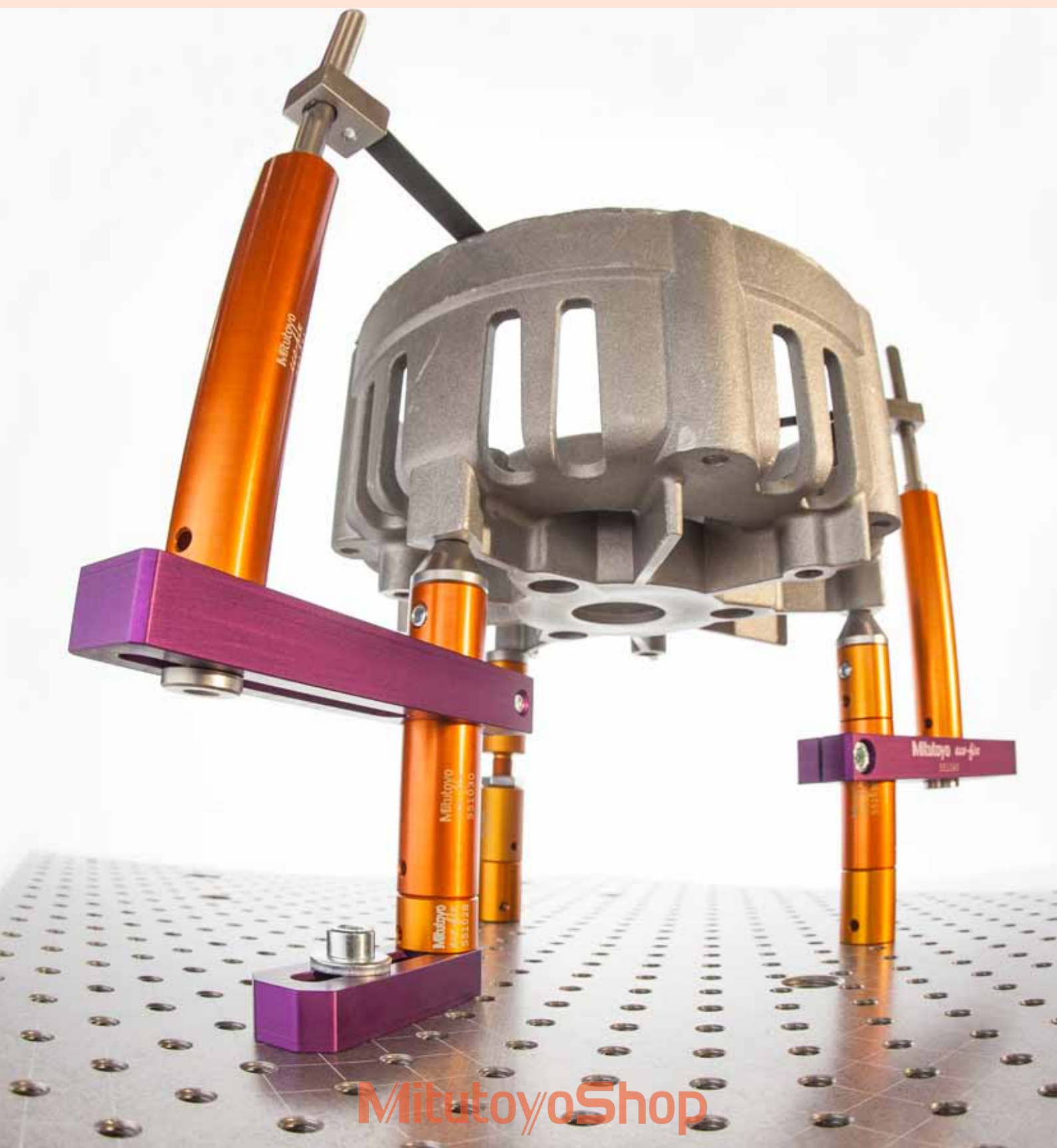
Part No. K551128

Clamping elements 1

Part No.	Qty.	Part name
K550716	5	Straight pin with thread
K550554	2	Spring clip, \varnothing 8 mm L= 40 mm
K550279	3	Spring clip, \varnothing 8 mm L= 60 mm
	10	

Straight pins

Part No.	Qty.	Part name
K550888	5	Straight pin mini \varnothing 6 mm x 20 mm
K550889	5	Straight pin mini \varnothing 6 mm x 40 mm
K550890	5	Straight pin mini \varnothing 6 mm x 60 mm
K550000	5	Straight pin \varnothing 8 mm x 30 mm
K550001	5	Straight pin \varnothing 8 mm x 50 mm
K550002	5	Straight pin \varnothing 8 mm x 65 mm
K550003	5	Straight pin \varnothing 8 mm x 85 mm
	35	

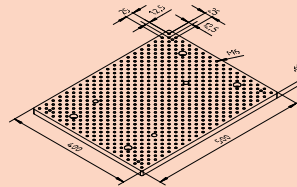
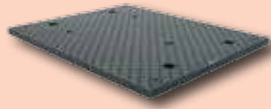


MitutoyoShop

System Elements

Base plate eco-fix 500 mm x 400 mm

Made of hard-anodised aluminium, with connecting thread M6, grid distance 12.5 mm / 25 mm

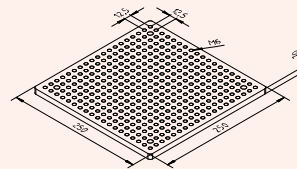
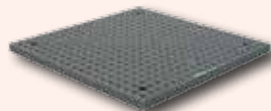


Part No.: K551033

Weight 7600 g

Base plate eco-fix 250 mm x 250 mm

Made of hard-anodised aluminium, with connecting thread M6, grid distance 12.5 mm

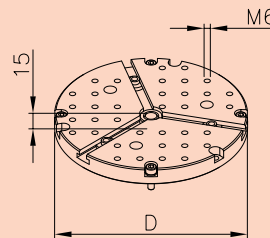


Part No.: K551034

Weight 1500 g

Adaptor plate \varnothing 150 mm

Made of hard-anodised aluminium, to adapt holding fixtures on Mitutoyo turntables for roughness and form measuring machines. Delivered including 3 slotted nuts and mounting parts



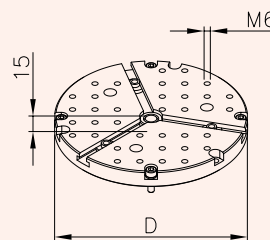
Part No.: K551038

Adaptor plate 150 mm for Mitutoyo turntables RA114/6 and RA1500

Weight 720 g

Adaptor plate \varnothing 200 mm

Made of hard-anodised aluminium, to adapt holding fixtures on Mitutoyo turntables for roughness and form measuring machines. Delivered including 3 slotted nuts and mounting parts



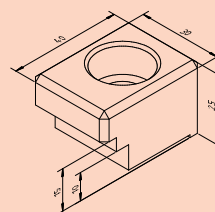
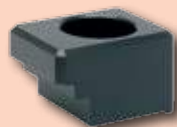
Part No.: K551039

Adaptor plate 200 mm for Mitutoyo turntables 12AAD975 and RA2000DS/DH

Weight 1300 g

Clamping claw eco-fix

For fixing of base plates on the measuring table



Part No.: K551032

Weight 27 g

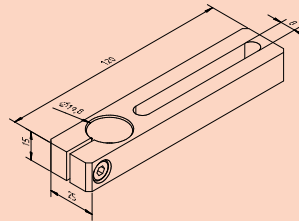
SYSTEM COMPONENTS

SYSTEM COMPONENTS

Receiving bracket

L = 120 mm, \varnothing 20 mm

For mounting on location pins, to reach any position, e.g. for positioning of clamping elements directly on receiving points



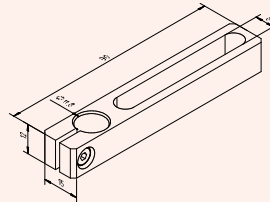
Part No.: K551045

Weight 88 g

Receiving bracket

L = 90 mm, \varnothing 12 mm

For mounting on location pins, to reach any position, e.g. for positioning of clamping elements directly on receiving points

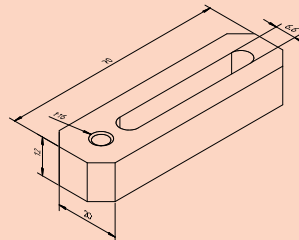


Part No.: K551044

Weight 26 g

Receiver bracket large

To reach any receiving position between the connecting threads

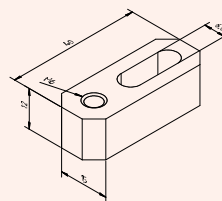


Part No.: K551036

Weight 34 g

Receiver bracket small

To reach any receiving position between the connecting threads

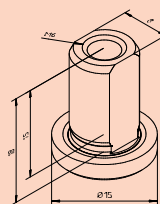


Part No.: K551035

Weight 14 g

Slotted nut h = 15 mm

Appropriate with receiving bracket 551045, for mounting e.g. location pins on the receiving bracket, to reach any position in space, e.g. for positioning of clamping elements directly on receiving points



Part No.: K551047

Weight 9 g

Mitutoyo Fixtures – Experience in Accuracy

MITUTOYO FIXTURES

Industrial quality assurance requires increasing universality, flexibility and the ideal shape for absolute precision. Here Mitutoyo show exactly what they are capable of: maximum accuracy, pioneering innovation and convincing economics.

It is not only the technical capabilities of that stand out from the crowd. Equally impressive is the integrated nature of the entire concept, right through to the seamless service environment. This concept forms the customer-oriented basis for a multi-faceted range of services that will open up a new dimension of quality assurance to every user: world-class measuring technology from Mitutoyo.

You can choose eco-fix, the modular fixture system especially for use in visual coordinate measuring machines, vari-fix together with RST profile, which allows free and unrestricted orientation of the workpiece in any desired pick-up position and opti-fix, especially developed for vision and optical measuring systems, which ensures a permanent error-free transfer of values.

For measurably better results.

Mitutoyo means that you can count on the experience, competence and performance of one of the world's leading measurement technology specialists and a customer-focused service without equal comparison.

Mitutoyo: Performance made perfect.

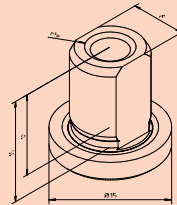
MitutoyoShop



System Elements

Slotted nut h = 12 mm

Appropriate with receiving bracket 551044, for mounting e.g. location pins on the receiving bracket, to reach any position in space, e.g. for positioning of clamping elements directly on receiving points

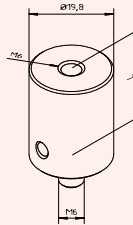


Part No.: K551046

Weight 8 g

Location pin Ø 20 mm

For the adjustment of the required height of the fixture



Part No.:

K551028 L = 13 mm

K551029 L = 25 mm

K551030 L = 50 mm

K551031 L = 100 mm

Weight 10 g

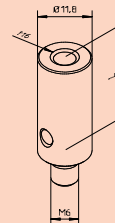
Weight 19 g

Weight 39 g

Weight 83 g

Location pin Ø 12 mm

For the adjustment of the required height of the fixture



Part No.:

K551024 L = 13 mm

K551025 L = 25 mm

K551026 L = 50 mm

K551027 L = 100 mm

Weight 3 g

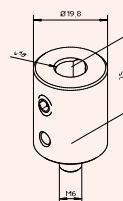
Weight 6 g

Weight 13 g

Weight 27 g

Location pin Ø 20 mm

With bore Ø 8 mm for connecting of elements with 6 mm connecting pin

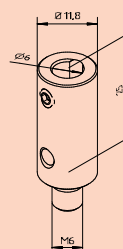


Part No.: K551043

Weight 19 g

Location pin Ø 12 mm

With bore Ø 6 mm for connecting of elements with 6 mm connecting pin



Part No.: K551042

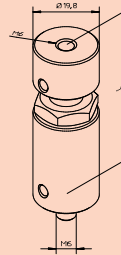
Weight 7 g

SYSTEM COMPONENTS

SYSTEM COMPONENTS

Adjustable location pin ø 20 mm

For the adjustment of the required height of receiving positions



Part No.: K551040
Weight 44 g

Adjustable location pin ø 12 mm

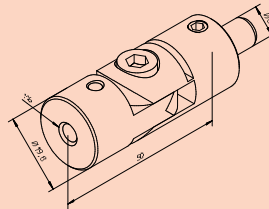
For the adjustment of the required height of receiving positions



Part No.: K551041
Weight 15 g

Turn-swivel joint ø 20 mm

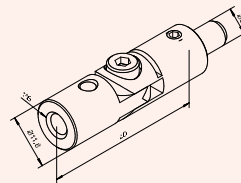
To reach any position in space



Part No.: K551076
Weight 49 g

Turn-swivel joint ø 12 mm

To create free positions in space

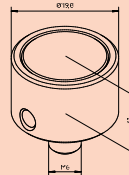


Part No.: K551075
Weight 15 g

System Elements

Magnetic receiver ø 20 mm

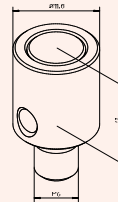
For quick and easy clamping
of workpieces



Part No.: K551074
Weight 15 g

Magnetic receiver ø 12 mm

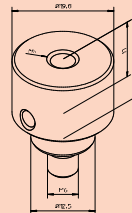
For quick and easy clamping
of workpieces



Part No.: K551073
Weight 5 g

Adaptor pin eco-repro ø 20 mm

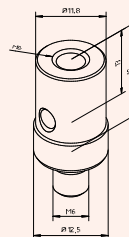
For connecting the eco-fix
systems on repro-fix base
plates or profiles



Part No.: K551067
Stainless steel
Weight 35 g

Adaptor pin eco-repro ø 12 mm

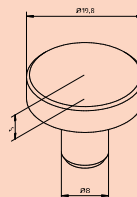
For connecting the eco-fix
systems on repro-fix base
plates or profiles



Part No.: K551066
Stainless steel
Weight 20 g

Flat top ø 20 mm

For direct workpiece support



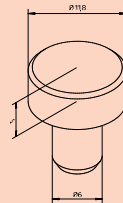
Part No.: K551070
Stainless steel
Weight 17 g

SYSTEM COMPONENTS

SYSTEM COMPONENTS

Flat top \varnothing 12 mm

For direct workpiece support



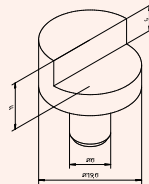
Part No.: K551069

Stainless steel

Weight 6 g

Stopper element

For receiving a workpiece in a defined position

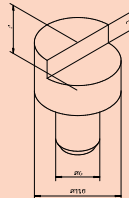


Part No.: K550982

Weight 25 g

Stopper element mini

For receiving a workpiece in a defined position

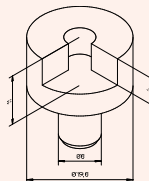


Part No.: K550250

Weight 8 g

Back square

For receiving a workpiece in a defined position in XYZ

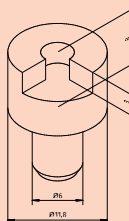


Part No.: K550248

Weight 27 g

Back square mini

For receiving a workpiece in a defined position in XYZ



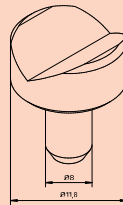
Part No.: K550247

Weight 8 g

System Elements

V-block

For receiving of e.g. rotationally symmetrical parts in a defined position

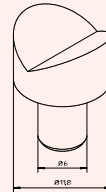


Part No.: K550058

Weight 24 g

V-block mini

For receiving of e.g. rotationally symmetrical parts in a defined position

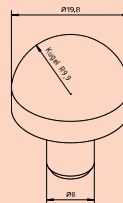


Part No.: K550262

Weight 7 g

Sphere top \varnothing 20 mm

For direct workpiece support on non regular surfaces



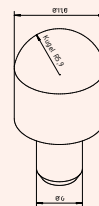
Part No.: K551072

Stainless steel

Weight 28 g

Sphere top \varnothing 12 mm

For direct workpiece support on non regular surfaces



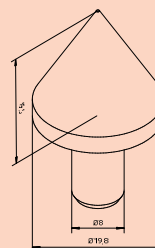
Part No.: K551071

Stainless steel

Weight 11 g

Cone receiver

For receiving parts in bores or centerings etc.



Part No.: K550365

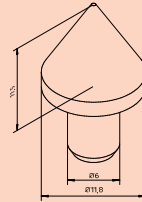
Weight 26 g

SYSTEM COMPONENTS

SYSTEM COMPONENTS

Cone receiver mini

For receiving parts in bores or centerings etc.

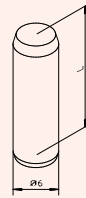


Part No.: K550261

Weight 6 g

Straight pin mini

As stopper element



Part No.:

K550888 L = 20 mm

K550889 L = 30 mm

K550890 L = 40 mm

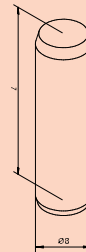
Weight 4 g

Weight 7 g

Weight 12 g

Straight pin

As stopper element



Part No.:

K550000 L = 30 mm

K550001 L = 50 mm

K550002 L = 65 mm

K550003 L = 85 mm

Weight 12 g

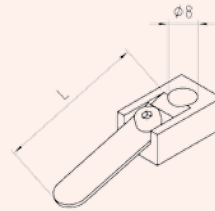
Weight 19 g

Weight 25 g

Weight 30 g

Spring clip

For simple and quick clamping of parts



Part No.:

K550554 d = 8 mm L = 40 mm

K550279 d = 8 mm L = 60 mm

K550278 d = 6 mm L = 40 mm

K550292 d = 6 mm L = 60 mm

Weight 25 g

Weight 27 g

Weight 27 g

Weight 29 g

Straight pin with thread

For receiving of spring clip, d = 8 mm, directly on base plates or assembly elements

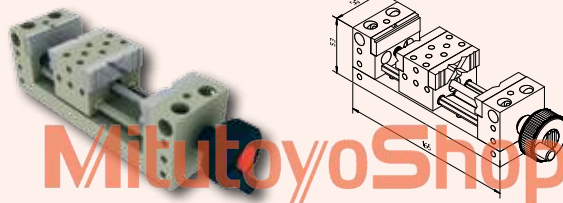


Part No.: K550716

Weight 32 g

Vice

Clamping jaws equipped with prisms and surfaces can be changed and combined. By reason of the two-way double function, a very flexible fixation is possible. Connecting threads on the top of the jaws, allows e.g. in combination with pins the internal fixation of e.g. turning workpieces. Clamping range 0-68 mm.



Part No.: K551078

Weight 920 g

MitutoyoShop

Mitutoyo vari-fix RST-Profil

vari-fix

The novel clamping system was developed by the system provider KOME G Industrielle Messtechnik GmbH in Völklingen – a wholly-owned subsidiary of the measuring instruments specialists Mitutoyo Europe GmbH. KOME G is bringing out the new product development initially in three standard models with adjustment heights of 375 - 575 mm, 500 - 825 mm and 625 - 1075 mm.

The system can also be customised to different adjustment heights on request. The basis of the entire device are top-frame profile rails that can be mounted directly on the measuring table of the coordinate measuring machine. Alternatively, the S-profile from MITUTOYO can be used, or the pillars with base plates can be mounted on the CMM table.

MITUTOYO vari-fix allows free and unrestricted orientation of the workpiece in any desired pick-up position. The workpiece is being fastened to any of a number of columns arranged along base rails. The individual columns are height-adjustable, and a swivel joint at the upper end serves as a pick up element for the workpiece. The joint allows 360 degrees of rotation about the axis of the column and has a swivel range of +/- 90 degrees. The positioning can be finely adjusted along the X-, Y- and Z-axes by +/- 2.5 millimeters. Thanks to the extremely exible combination of rotation and tilt, any spatial angle can be achieved.

RST-profil

For the first time the new RST-profile from MITUTOYO combines in one profile the advantages of three different kinds of profiles for fixture construction. On one hand, there is the unbeatable advantage of the dovetail profile with the option of flexibly repositioning sliding elements, in order, for example, to react extremely rapidly and cost effectively to coordinate changes of fixture points. This is combined with the option of the grid profile, which reproducibly facilitates the introduction of add-ons in a fixed 50 mm grid. Moreover, additions can be freely positioned on the profile's T-nuts by means of slot nuts. This makes it possible to combine virtually all kinds of profiles and add-on parts, even from third parties.

The matt-black surface suppresses reflections, which is especially advantageous for optical measuring systems. All these features of the RST profile contribute to the minimisation of material provision in modular fixture construction, which significantly reduces the costs for storage and shortens assembly times.

RST-profiles are compatible with the tried & tested MITUTOYO profiles and are ideal for combining with the vari-fix clamping columns.



VARI-FIX+RST-PROFIL

MitutoyoShop

MITUTOYO VARI-FIX



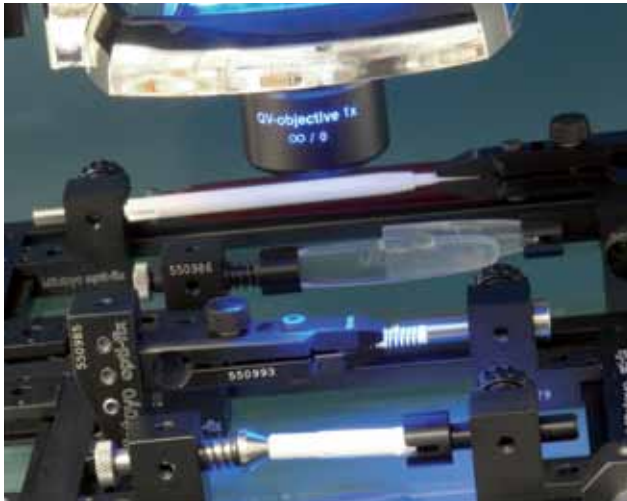
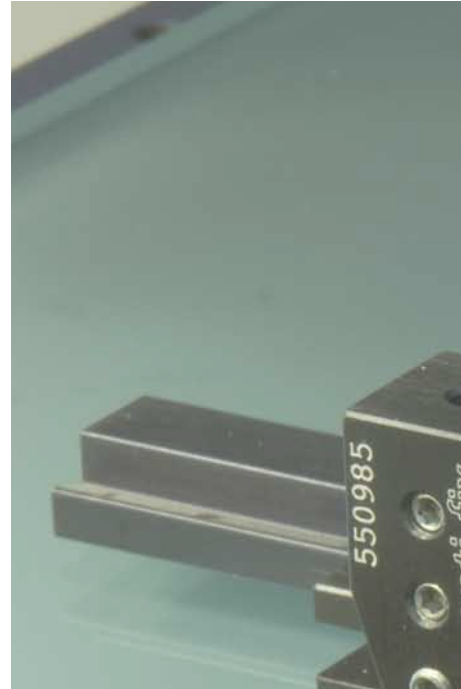
MitutoyoShop

MITUTOYO opti-fix

The modular clamping system opti-fix has been developed especially for optical coordinate measuring systems.

"MITUTOYO opti-fix" guarantees safe part fixture during measurement and consequently, ensures a permanent error-free transfer of measured values. This functional configuration makes also series measurements considerably easier.

In order to reduce disturbing reflections of lighting systems and ambient light to a minimum, all important construction elements are anodised in flat-black or matte finished.



MITUTOYO OPTI-FIX



For the mounting of the basic elements onto the CMM table there are different fastening types available.

- direct connection by means of vacuum clamping plates, independent from the existing connecting threads at the sides of the CMM table
- direct connection by means of fastening brackets using the connecting threads at the sides of the CMM table
- direct quick-connection for exchangeable modules by use of the innovative quick exchange system with magnetic retention force

The opti-fix system allows the quick and safe solution of very different tasks using only a few components. In case of measuring methods using reflected as well as transmitted light for measurement of cubic, rotationally symmetrical and especially flat workpieces, the use of opti-fix is a really practical solution.

Furthermore, the spring clips and centering pins of different design which are integrated in the system allow also tactile measuring. MITUTOYO opti-fix offers the user a large number of possibilities for part fixing, from clamping tweezers for miniature test specimens to precision vice for large parts.

MITUTOYO FIXTURES

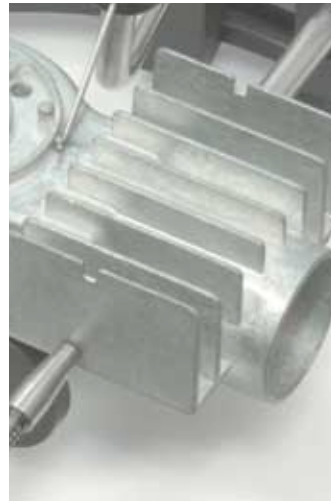
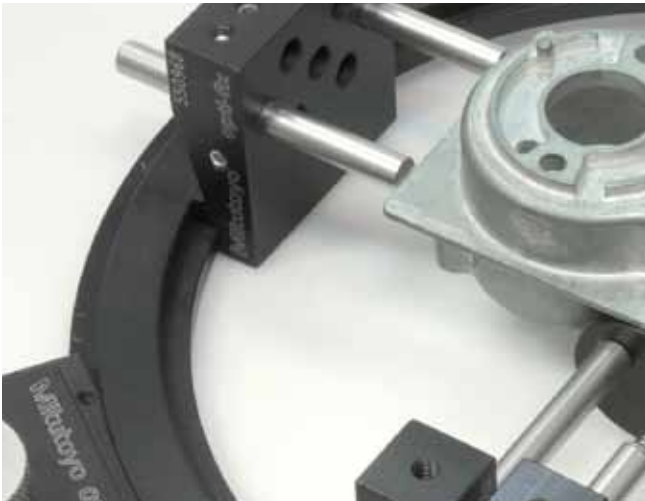


MitutoyoShop

MITUTOYO opti-fix round

The innovative, newly developed MITUTOYO tool "MITUTOYO opti-fix round" completes the opti-fix types in the true sense of the word "the wheel comes full circle".

The circular design allows an infinitely variable adjustment of 360° in horizontal level as well as in space and additionally, the "pin fixing" at the sides ensures a user-friendly access to the workpiece.



Mitutoyo

MitutoyoShop

MITUTOYO OPTI-FIX ROUND

MITUTOYO OPTI-FIX ROUND



MITUTOYO opti-fix round has been developed especially for workpieces with an exceptional geometry which could not be placed functionally within the measuring volume by means of the existing standard methods.

The combination of the two system types MITUTOYO opti-fix and opti-set round allows the user professional part clamping for the whole parts range which needs optical/tactile measuring methods. No more improvisation in the field of optical coordinate measuring systems.

Kit opti-set Start



Part No.: K551056

Smallest kit, consisting of 16 parts, for construction of a simple rail system with a length of 250 mm, for fixing parts with a simple part geometry. Fastening brackets, vacuum plates or magnetic holders for mounting the clamping system on the measuring machine, please order separately.

Part No.	Qty.	Part name
K550838	1	Connector clamp. profile rail; L = 100 mm
K550854	1	Clamping profile rail without slot L = 250 mm
K550842	1	Connector with connector grooves
K550853	3	Clamping fixture (with thread M4)
K550891	3	Straight pin for holding-down devices L = 30 mm
K550845	2	Toothed fixture L = 40 mm
K550843	1	Toothed fixture L = 100 mm
K550978	1	Spring clip 30° short
K550980	1	Spring clip 30° long
K550979	1	Spring clip 15° short
K551020	1	Allen key 1.5 mm
	16	



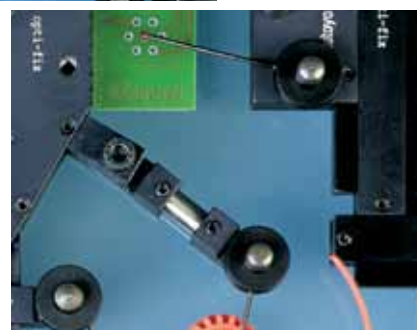
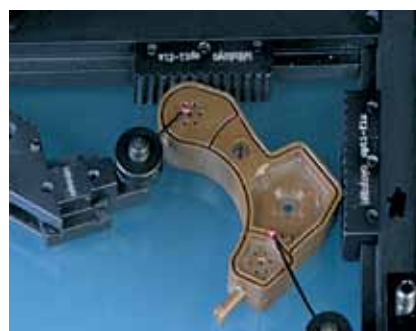
Kit opti-set Basic



Part No.: K551057

Kit, consisting of 26 parts, for construction of a basic frame with the dimensions of 200 mm x 100 mm, for fixing parts with a simple geometry. Fastening brackets, vacuum plates or magnetic holders for mounting the clamping system on the measuring machine, please order separately.

Part No.	Qty.	Part name
K550838	3	Connector clamp. profile rail; L = 100 mm
K550857	2	Clamping profile rail without slot L = 200 mm
K550853	4	Clamping fixture (with thread M4)
K550891	4	Straight pin for holding-down devices L = 30 mm
K550845	4	Toothed fixture L = 40 mm
K550978	2	Spring clip 30° short
K550980	2	Spring clip 30° long
K550979	2	Spring clip 15° short
K550981	2	Spring clip 15° long
K551020	1	Allen key SW 1.5 mm
	26	



Kit opti-set Rotation



Part No.: K551058

Kit, consisting of 23 parts, for construction of a basic frame with the dimensions of 250 mm x 200 mm, for fixing parts with rotationally symmetrical parts with and without centre holes. Fastening brackets, vacuum plates or magnetic holders for mounting the clamping system on the measuring machine, please order separately.

Part No.	Qty.	Part name
K550854	2	Clamping profile rail; L = 250 mm
K550859	2	Clamping profile rail; L = 200 mm
K550984	1	Clamping block GG
K550985	2	Clamping block GK
K550879	1	Tailstock with centre
K550986	1	Tailstock with spring-loaded centre
K551018	1	Prism 120° compl. with spring clip
K550972	1	Prismatic eccentric receiver
K550994	2	Centring receive
K550303	2	Receiver pin stepped 100 mm
K551062	2	Shaft 6 mm x 100 mm
K550842	4	Connector with connector grooves
K551020	1	Allen key 1.5 mm
K551021	1	Allen key 2 mm
	23	



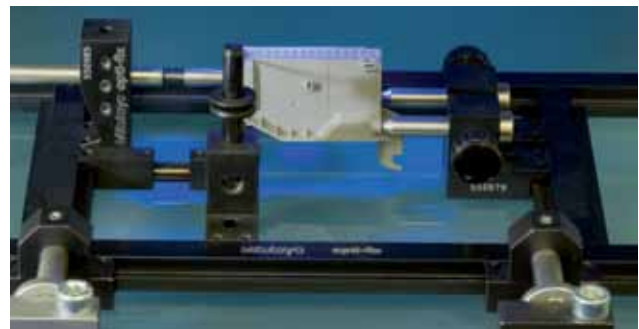
Kit opti-set Advanced



Part No.: K551059

Kit, consisting of 51 parts, for construction of a basic frame with the dimensions of 400 mm x 250 mm, for fixing parts with complex part geometry. Fastening brackets, vacuum plates or magnetic holders for mounting the clamping system on the measuring machine, please order separately.

Part No.	Qty.	Part name
K550210	2	Clamping profile rail; L = 400 mm
K550836	3	Clamping profile rail; L = 250 mm
K550842	6	Connector with connector grooves
K550838	1	Clamping profile rail; L = 100 mm
K550984	2	Clamping block GG
K550985	1	Clamping block GK
K550213	1	Clamping block GKD, rotatable
K550858	1	Toothed fixture L = 100 mm
K550845	2	Toothed fixture L = 40 mm
K550970	1	Eccentric receiver
K550971	1	Prismatic receiver / locator
K550304	1	Receiver plane
K550301	3	Receiver pin stepped L = 60 mm
K550302	3	Receiver pin stepped L = 80 mm
K550303	3	Receiver pin stepped L = 100 mm
K550990	3	Rectangular receiver pin L = 50 mm
K550323	2	Rectangular receiver pin L = 25 mm
K551012	1	Spring-loaded clamping rod
K550978	3	Spring clip with bent tip, short L = 30°
K550979	3	Spring clip with bent tip, short L = 15°
K550980	3	Spring clip with bent tip, long L = 30°
K550981	3	Spring clip with bent tip, long L = 15°
K551020	1	Allen key 1.5 mm
K551021	1	Allen key 2.0 mm
	51	



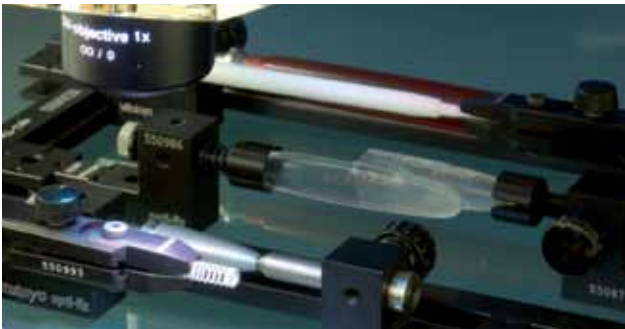
Kit opti-set Professional



Part No.: K551060

Very complex kit, consisting of 115 parts, for construction of a basic frame with the dimensions of 400 mm x 250 mm, for fixing parts with very complex part geometry. The fixing of parts with a rotational part geometry is also available problem-free.

Fastening brackets, vacuum plates or magnetic holders for mounting the clamping system on the measuring machine, please order separately.



Part No.	Qty.	Part name
K550210	2	Clamping profile rail; L = 400 mm
K550836	4	Clamping profile rail; L = 250 mm
K550842	8	Connector with connector grooves
K550838	2	Clamping profile rail; L = 100 mm
K550985	2	Clamping block GK
K550984	2	Clamping block GG
K550213	2	Clamping block GKD, rotatable
K550165	3	Toothed fixture flat L = 40 mm
K550324	2	Toothed fixture flat L = 100 mm
K550845	1	Toothed fixture flat L = 40 mm
K551013	2	Toothed fixture flat with fine teeth L = 40 mm
K550853	8	Clamping fixture (with thread M4)
K550891	4	Straight pin for holding-down devices L = 30 mm
K551017	4	Straight pin for holding-down devices L = 12 mm
K550978	2	Spring clip with bent tip, short 30°
K550979	2	Spring clip with bent tip, short 15°
K550980	2	Spring clip with bent tip, long 30°
K550981	2	Spring clip with bent tip, long 15°
K550970	2	Eccentric receiver
K550972	2	Prismatic eccentric receiver
K550971	2	Prismatic receiver / locator
K550304	1	Receiver plane
K550301	3	Receiver pin stepped L = 60 mm
K550302	3	Receiver pin stepped L = 80 mm
K550303	3	Receiver pin stepped L = 100 mm
K550990	3	Rectangular receiver pin L = 50 mm
K550323	3	Rectangular receiver pin L = 25 mm
K551012	2	Spring-loaded clamping rod
K550879	1	Tailstock with centre
K550986	1	Tailstock with spring-loaded centre
K550839	4	Telescope fixture slider
K550852	4	Telescope fixture end piece
K550887	4	Straight pin 6 x 10 mm
K550888	4	Straight pin 6 x 20 mm
K550889	4	Straight pin 6 x 30 mm
K550890	4	Straight pin 6 x 40 mm
K550840	2	Knuckle joint with dovetail
K550851	2	Swivel receiver with knife edge
K550847	2	Swivel receiver with straight pin
K551018	1	Prism 120° compl. with spring clip
K551014	1	Precision quick chuck 0-4 mm
K551016	1	Adaptor plate M4
K551020	1	Allen key 1.5 mm
K551021	1	Allen key 2 mm

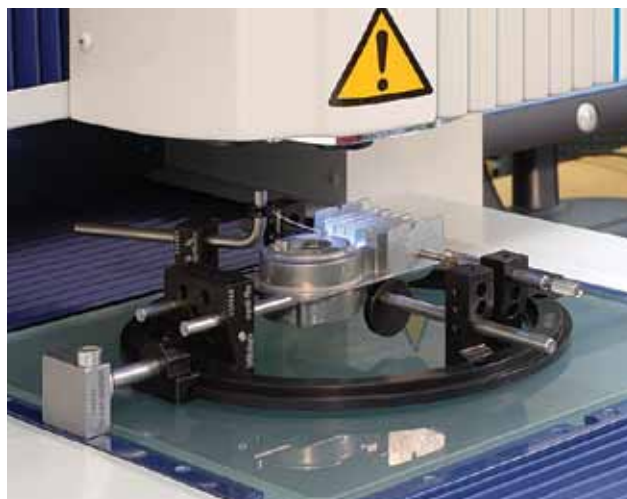
Kit opti-set Round



Part No.: K550298

Kit consisting of 18 parts, with locating and clamping elements, incl. adaptor plates for adaptation to e.g. basic frame of the rail rail system MITUTOYO opti-fix. Fastening brackets, vacuum plates or magnetic holders for mounting the clamping system on the measuring machine, please order separately.

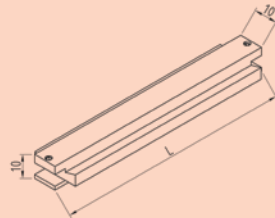
Part No.	Qty.	Part name
K550983	1	Circular clamping profile
K550976	2	Adaptor plate
K550977	1	Clamping block RKD; small, rotatable
K550969	1	Clamping block RK; small
K550968	2	Clamping block RG; large
K550302	3	Receiver pin 80 mm
K550970	1	Eccentric receiver
K550990	2	Rectangular receiver pin
K550870	1	Spring clip 15° short
K550849	1	Spring clip 15° long
K551012	1	Spring-loaded clamping rod
K551020	1	Allen key 1.5 mm
K551021	1	Allen key 2.0 mm
	18	



System Components

Clamping profile rail

With front connector groove
for construction of basic frames



Part No.:

K550838 L = 100 mm

K550859 L = 200 mm

K550835 L = 240 mm

K550836 L = 250 mm

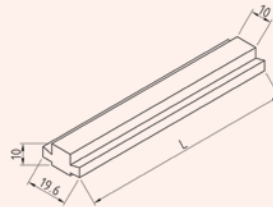
K550991 L = 400 mm

K550920 L = 500 mm

Further lengths available on demand

Clamping profile rail

For construction of basic frames



Part No.:

K550861 L = 100 mm

K550857 L = 200 mm

K550854 L = 250 mm

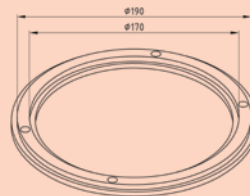
K550210 L = 400 mm

K550992 L = 500 mm

Further lengths available on demand

Basic circular clamping profile "opti-round"

As base for receiving elements
of "opti-round" type



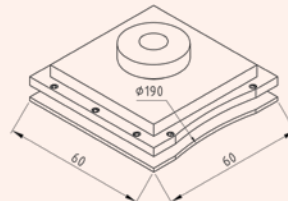
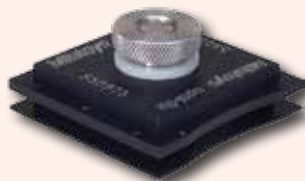
Part No.: K550983

Da = 190 mm

Di = 170 mm

Vacuum plate

For easy mounting of profiles
or of the circular clamping profile
directly on the glass plate of
the measuring device

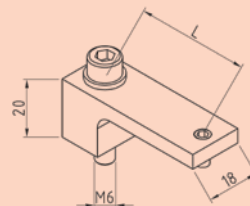


Part No.: K550975

60 mm x 60 mm

Fastening bracket

For mounting of basic profiles
or frames on measuring devices



Part No.:

K550886 20 mm - 22 mm

K550860 24 mm - 26 mm

K550185 33 mm - 35 mm

K550881 36 mm - 38 mm

K550882 39 mm - 41 mm

K550884 44 mm - 49 mm

K550883 62 mm - 67 mm

K550885 82 mm - 87 mm

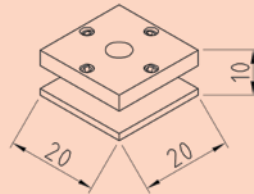
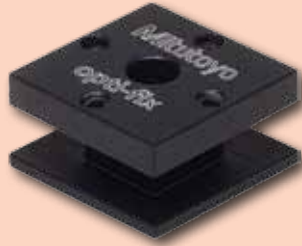
Further types available on demand

SYSTEM COMPONENTS

SYSTEM COMPONENTS

Connector with connector grooves

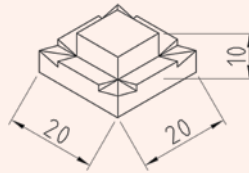
For rectangular connection of profile rails, respectively for reinforcement of profile connections



Part No.: K550842
20 mm x 20 mm

Connector with dovetail connector

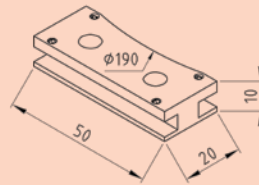
E.g. for front connection to profile rails with connector groove



Part No.: K550841
20 mm x 20 mm

Adaptor plate

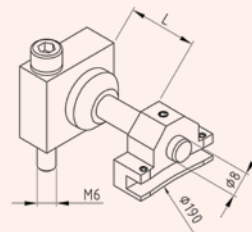
As adaptor between the straight profile rails and the basic circular clamping profile "opti-round"



Part No.: K550976
50 mm x 20 mm x 10 mm

Magnetic holder Mag 1

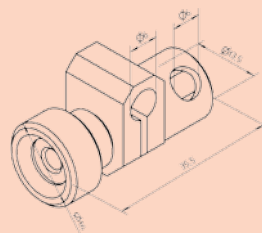
For quick and easy mounting of opti-fix systems by magnets. Easy removing or mounting of complete opti-fix fixtures. Adjustable to the table dimension of the measuring devices.



Part No.: K550989
M6
L = 7,5 mm - 25 mm
Further lengths on demand

Clamping knuckle

For creating of free angles, e.g. with the spring loaded clamping rod 551012



Part No.: K551083

Systematical Design, Colours for Improved Functionality

The modular clamping system eco-fix allows relaxed working in many ways. For the first time, functions and colours are conjoint in a practice-oriented concept for time-saving economical working and confusion-proof handling.

Systematical design, keeping an eye on the essential: eco-fix concentrates on accomplishing nearly every clamping task in a likewise cost- and performance-optimising way. Logically assignable elements in an uncomplicated and userfriendly design build up on the base plate equipped only with threads.



The major advantage of eco-fix is that - in contrast to conventional solutions - no additional joints are required due to the state-of-the-art construction. These are the ideas that count in a daily job routine and make eco-fix noticeably better priced than similar systems – without saving on performance and versatility.

The results are systematic efficiency at compelling profitability and considerably reduced costs at enormous versatility.

Even optically eco-fix sets new highlights: The distinctive modern colouring of the eco-fix components is by far more than a styling feature. Due to the clear optical differentiation of the elements the clamping device is distinctly silhouetted against the workpiece to be measured – a decisive advantage for interactive documentation.



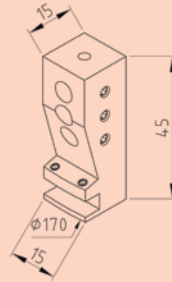
Mitutoyo

MitutoyoShop

System Components

Clamping block RK opti-round

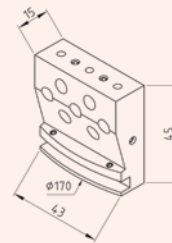
For receiving of the system components such as e.g. receiver pin or eccentric receiver



Part No.: K550969
15 mm x 15 mm x 45 mm

Clamping block RG opti-round

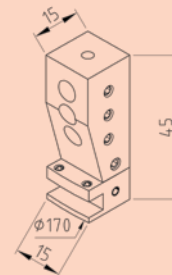
For receiving of the system components such as e.g. receiver pin or eccentric receiver



Part No.: K550968
45 mm x 15 mm x 45 mm

Clamping block RKD rotatable opti-round

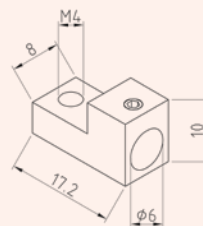
For receiving of the system components such as e.g. receiver pin or eccentric receiver



Part No.: K550977
15 mm x 15 mm x 45 mm

Telescope fixture slider

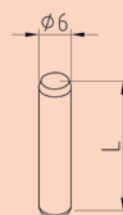
In connection with end piece and straight pin $\phi 6$ mm for positioning of e.g. spring clip or location pin



Part No.: K550839
17 mm x 8 mm x 10 mm

Straight pin $\phi 6$ mm

As connecting element for telescope fixture



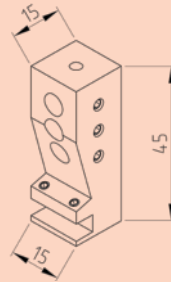
Part No.:
K550887 L = 10 mm
K550888 L = 20 mm
K550889 L = 30 mm
K550890 L = 40 mm

SYSTEM COMPONENTS

SYSTEM COMPONENTS

Clamping block GK

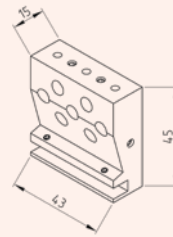
For receiving of the system components such as e.g. receiver pin or eccentric receiver



Part No.: K550985
15 mm x 15 mm x 45 mm

Clamping block GG

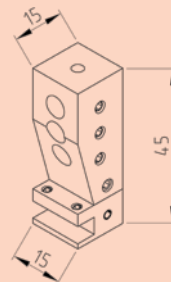
For receiving of the system components such as e.g. receiver pin or eccentric receiver



Part No.: K550984
45 mm x 15 mm x 45 mm

Clamping block GKD rotatable

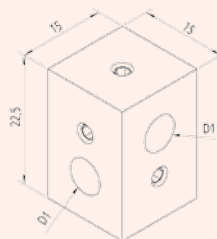
For receiving of the system components such as e.g. receiver pin or eccentric receiver



Part No.: K550213
15 mm x 15 mm x 45 mm

Holder 90°

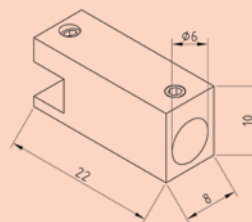
e.g. for attaching a spring clip directly to a workpiece support



Part No.: K551183
22 mm x 15 mm x 15 mm
D1= 6 mm

Telescope fixture end piece

In connection with slider and straight pin \varnothing 6 mm for positioning of e.g. spring clip or location pin



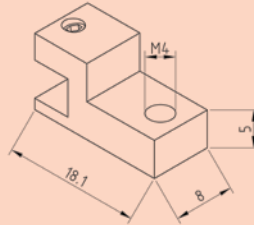
Part No.: K550852
22 mm x 8 mm x 10 mm



System Components

Clamping fixture with M4 thread

For receiving of e.g. spring clip or location pin. Can be also used as locating element

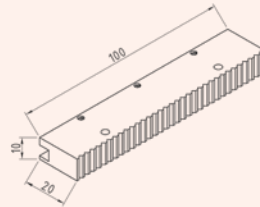


Part No.: K550853

18 mm x 8 mm x 10 mm

Toothed fixture

With longitudinal connector groove, as well as with M4 receiving thread for e.g. spring clips

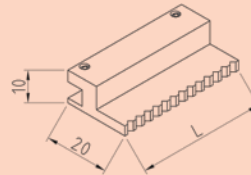


Part No.: K550858

100 mm x 20 mm x 10 mm

Toothed fixture flat

As direct workpiece locating element



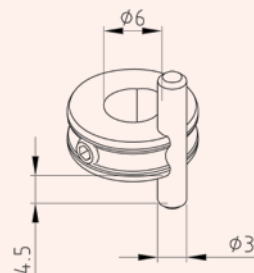
Part No.:

K550165 L = 40 mm

K550324 L = 100 mm

Swivel receiver with straight pin

As workpiece locating element for direct positioning



Part No.: K550847

Receiving $\phi 6$ mm /

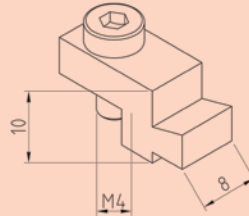
Locating $\phi 3$ mm

SYSTEM COMPONENTS

SYSTEM COMPONENTS

Knuckle joint with dovetail

In connection with clamping fixture for the construction of any angle

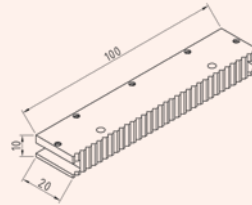


Part No.: K550840

20 mm x 8 mm x 10 mm

Toothed fixture

With longitudinal connector grooves and connector grooves at both ends as well as with M4 receiving thread for e.g. spring clips

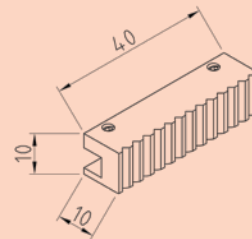


Part No.: K550843

100 mm x 20 mm x 10 mm

Toothed fixture 40

As direct workpiece locating element

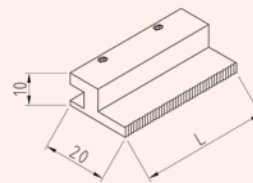


Part No.: K550845

40 mm x 10 mm x 10 mm

Toothed fixture flat with fine teeth

As direct workpiece locating element

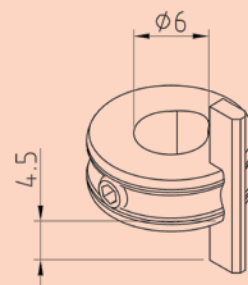


Part No.: K551013

40 mm x 20 mm x 10 mm

Swivel receiver with knife edge

As workpiece locating element for direct positioning



Part No.: K550851

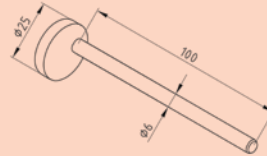
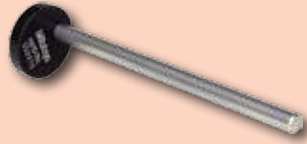
Receiving \varnothing 6 mm

MitutoyoShop

System Components

Eccentric receiver

As height-adjustable workpiece receiving element for mounting in the clamping blocks

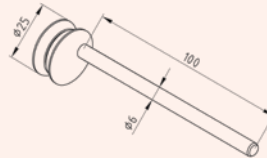


Part No.: K550970

L = 100 mm
ø = 25 mm

Prismatic eccentric receiver

As height-adjustable workpiece receiving element for mounting in the clamping blocks

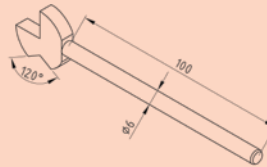
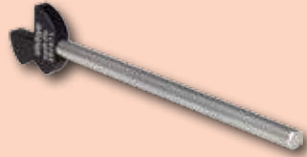


Part No.: K550972

L = 100 mm
ø = 25 mm

Prismatic receiver/locator

As workpiece receiving element for mounting in the clamping blocks

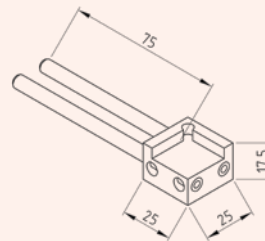
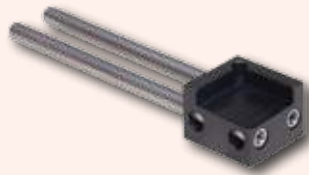


Part No.: K550971

L = 100 mm
Prism = 120°

Receiver plane

In connection with the clamping blocks, it can be used as direct workpiece locating element for free positioning

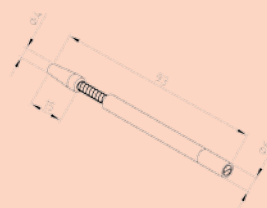


Part No.: K550304

L = 100 mm/
25 mm x 25 mm

Spring-loaded clamping rod

For pressing specimens against e.g. locating element



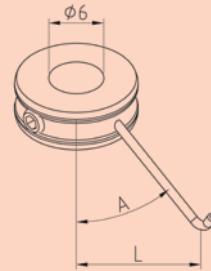
Part No.: K551012

ø 6 mm x 93 mm

SYSTEM COMPONENTS

Spring clip with bent tip

For clamping of specimens



Part No.:

K550978 A = 30° L = 19 mm

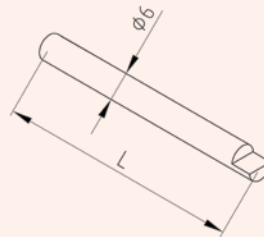
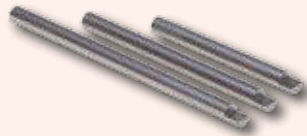
K550979 A = 15° L = 20 mm

K550980 A = 30° L = 33 mm

K550981 A = 15° L = 37 mm

Receiver pin stepped

In connection with the clamping blocks, it can be used as direct workpiece locating element for free positioning



Part No.:

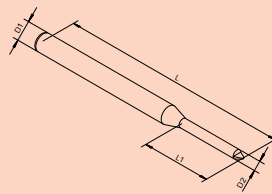
K550301 L = 60 mm

K550302 L = 80 mm

K550303 L = 100 mm

Receiver pin stepped mini

In connection with the clamping blocks, it can be used as direct workpiece locating element for free positioning of very small workpieces.



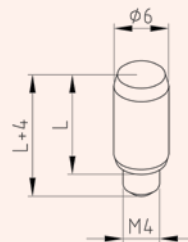
Part No.: K551915

D 1 = 6 mm / D2 = 3 mm

L = 80 mm / L1 = 25 mm

Straight pin $\phi 6$ mm

With M4 threaded pin, as receiving element for spring clips



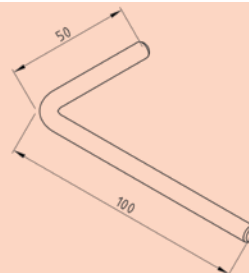
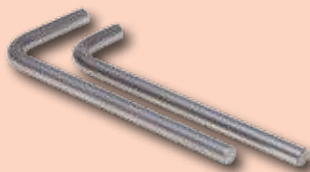
Part No.:

K550891 L = 30 mm

K551017 L = 12 mm

Rectangular receiver pin

As receiving element for spring clip



Part No.:

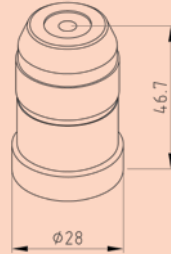
K550990 L = 50 mm

K550323 L = 25 mm

System Components

Precision quick chuck

With M4 receiving thread, for mounting of e.g. adaptor 551016 or other elements with M4 connecting thread

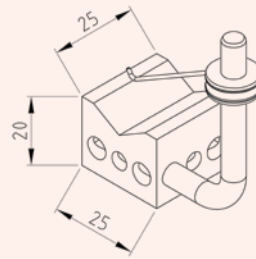


Part No.: K551014

Clamp. range: 0 - 4 mm
Total length: 47 mm

Prism 120° compl. with spring clip

For attachment to e.g. articulated arms or clamping blocks, for receiving of specimens ranging from \varnothing 2 mm to \varnothing 25 mm

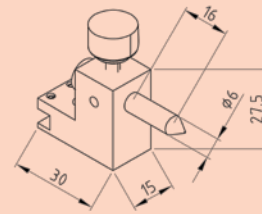


Part No.: K551018

20 mm x 25 mm

Tailstock with centre

For receiving of specimens between the tips

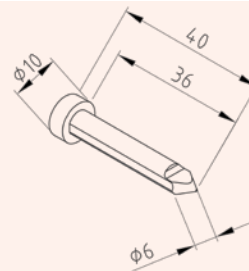


Part No.: K550879

Tip height: 20 mm
Adjust. range: 16 mm

Tailstock centre stepped for tailstock (N° K550879)

The step at the tip makes length scanning easier, especially in case of the transmitted light method

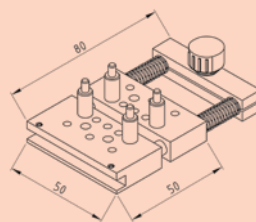


Part No.: K550333

Tip: \varnothing 6 mm

Precision vice for inside and outside clamping

With stepped receiver columns for clamping of most different specimen types



Part No.: K551010

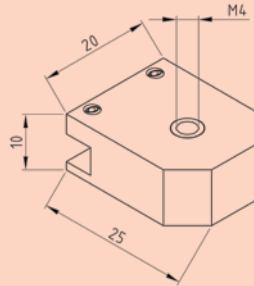
Clamping range: 10 mm - 50 mm

Extension of the clamping range can be realised by exchange of the guiding columns

SYSTEM COMPONENTS

Adaptor plate M4

For receiving of all elements with M4 connecting thread

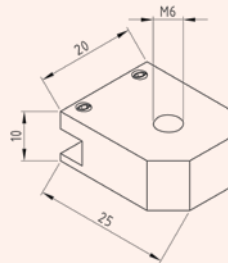


Part No.: K551016

25 mm x 20 mm x 10 mm

Adaptor plate M6

For receiving of all elements with M6 connecting thread

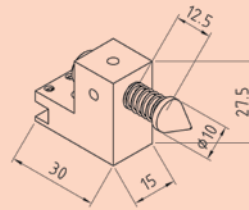
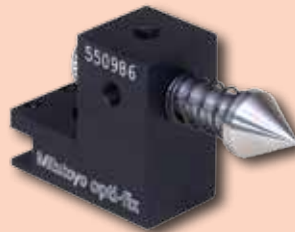


Part No.: K551015

25 mm x 20 mm x 10 mm

Tailstock with spring-loaded centre

In combination with part No. 550879 for easy and quick receiving of the specimens between the tips



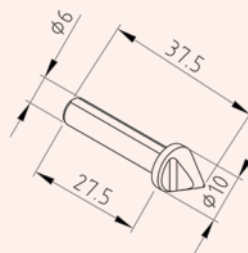
Part No.: K550986

Tip height: 20 mm

Stroke: 8 mm

Tailstock centre stepped for tailstock with spring-loaded centre (N° K550986)

The step at the tip makes length scanning easier, especially in case of the transmitted light method

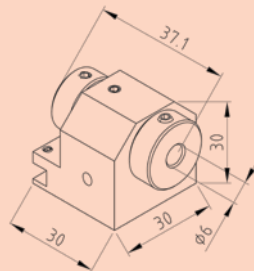


Part No.: K550334

Tip: \varnothing 10 mm

Ratchet spanner

For receiving of e.g. clamping tweezers, miniature precision chucks and all clamping elements with receiving diameter 6 mm



Part No.: K551011

Tip height: 15 mm

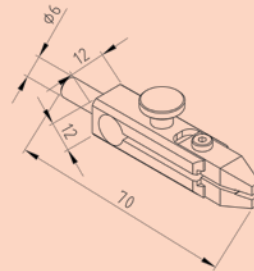
Circular positioning: 24° x 15°

System Components

Clamping tweezers consisting of:

Basic element N° K550993 Exchangeable tips N° K550997

For clamping of small and smallest specimens, receiving of the clamping tweezers in e.g. rotatable and swivel receiver, tailstock, clamping blocks or articulated arm. The use of different exchangeable tips allows extension of the clamping ranges at a reasonable price.

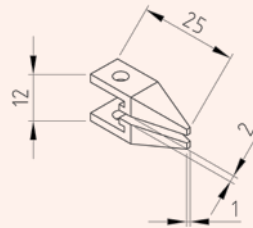


Part No.: K551019

Clamp. range: 0,5 mm - 1,5 mm
Clamp. width: 3 mm

Pair of exchangeable tips for clamping tweezers N° K551019

For clamping of small and smallest specimens

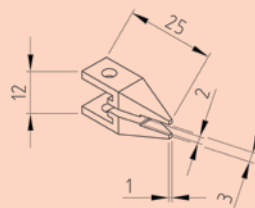


Part No.: K551008

Clamp. range: 0 mm - 2 mm
Clamp. width: 1 mm

Pair of exchangeable tips for clamping tweezers N° K551019

For clamping of small and smallest specimens

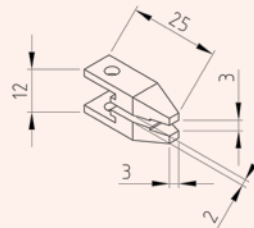


Part No.: K551009

Clamp. range: 1 mm - 3 mm
Clamp. width: 1 mm

Pair of exchangeable tips for clamping tweezers N° K551019

For clamping of small and smallest specimens

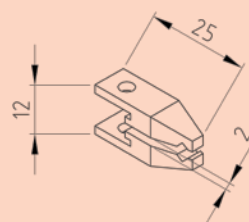


Part No.: K551007

Clamp. range: 1 mm - 3 mm
Clamp. width: 3 mm

Pair of exchangeable prismatic tips for clamping tweezers N° K551019

For clamping of small and smallest rotationally symmetrical specimens



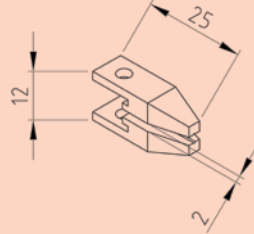
Part No.: K550998

Clamp. range: ϕ 4 mm - ϕ 5 mm

SYSTEM COMPONENTS

Pair of exchangeable prismatic tips for clamping tweezers N° K551019

For clamping of small and smallest rotationally symmetrical specimens

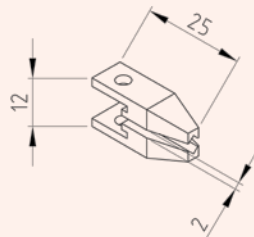


Part No.: K550999

Clamp. range: \varnothing 0,5 mm - \varnothing 2 mm

Pair of exchangeable prismatic tips for clamping tweezers N° K551019

For clamping of small and smallest rotationally symmetrical specimens

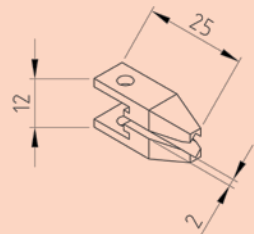


Part No.: K551003

Clamp. range: \varnothing 2 mm - \varnothing 3 mm

Pair of exchangeable prismatic tips for clamping tweezers N° K551019

For clamping of small and smallest rotationally symmetrical specimens

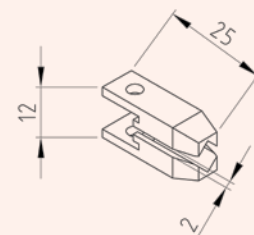


Part No.: K551004

Clamp. range: \varnothing 3 mm - \varnothing 4 mm

Pair of exchangeable prismatic tips for clamping tweezers N° K551019

For clamping of small and smallest rotationally symmetrical specimens

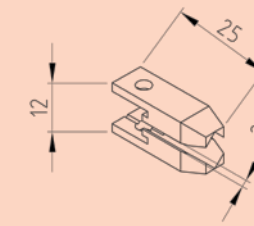


Part No.: K551005

Clamp. range: \varnothing 4 mm - \varnothing 5 mm

Pair of exchangeable prismatic tips for clamping tweezers N° K551019

For clamping of small and smallest rotationally symmetrical specimens



Part No.: K551006

Clamp. range: \varnothing 5 mm - \varnothing 6 mm

MITUTOYO eco-fix

MITUTOYO eco-fix

Another strong point: Assignment of system components during setup and storage is noticeably easier, faster and cannot be mixed up – thus saving time and labor costs – and once again increasing the economic benefit of eco-fix compared to other clamping systems.

The refreshing appearance and state-of-the-art styling of eco-fix are combined with an outstanding durability and resistibility. The system's base plates are made from hardcoated, the receptacle modules from anodised aluminium – which means long-lasting operation even under rougher conditions. Additionally, eco-fix features an extremely high load-carrying capacity.

And: The low own weight of the elements ensures easy and safe handling as well as uncomplicated storing. In eco-fix, lightness meets strength!

By the way: eco-fix complements MITUTOYO's repro-fix clamping system featuring receptacle modules made from hardened steel – approved and successful for many years. eco-fix and repro-fix are combinable and expandable as required.

MITUTOYO's eco-fix shows you how fascinating ideas can be!

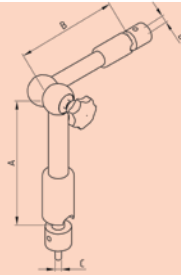


MitutoyoShop

System Components

Hydraulic articulated arm mini

With M4 connecting thread



Part No.: K550703

A = 60 mm

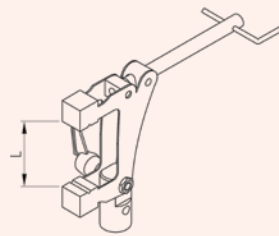
B = 60 mm

C = M6

D = M4

Clamping unit mini

With M4 connecting thread,
for mounting to e.g. articulated
arm or M4 adaptor (551016)

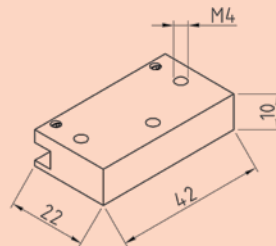


Part No.: K550707

Clamp. range: 0 mm - 25 mm

Holder for spring clip

Receiving block for receiving of
e.g. spring clip or other ele-
ments with M4 thread

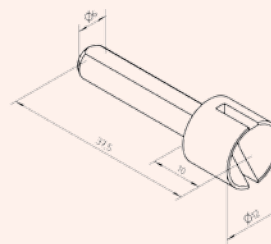


Part No.: K550850

42 mm x 22 mm x 10 mm

Centering unit

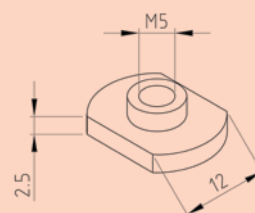
For centering of parts without
centre hole



Part No.: K550994

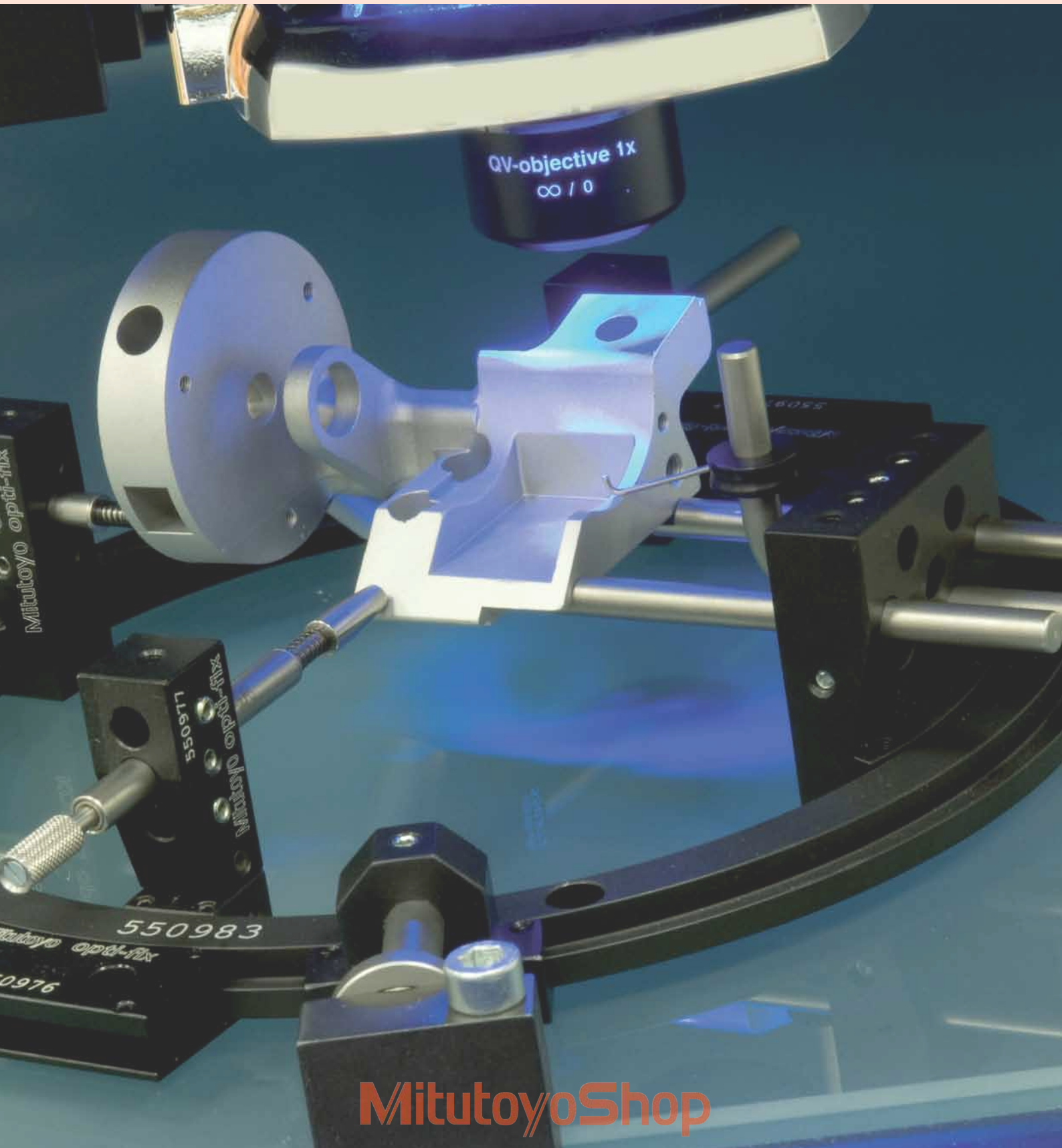
T-slot nut M5

For mounting of opti-fix
systems to e.g. projectors or
microscopes



Part No.: K550963

12 mm x 2,5 mm





Ask for the **STYLI AND ACCESSORIES** brochure!

Get concise information about Mitutoyo's manifold probe elements.

- Coordinate Measuring Machines
- Vision Measuring Systems
- Form Measurement
- Optical Measuring
- Sensor Systems
- Test Equipment and Seismometers
- Digital Scale and DRO Systems
- Small Tool Instruments and Data Management

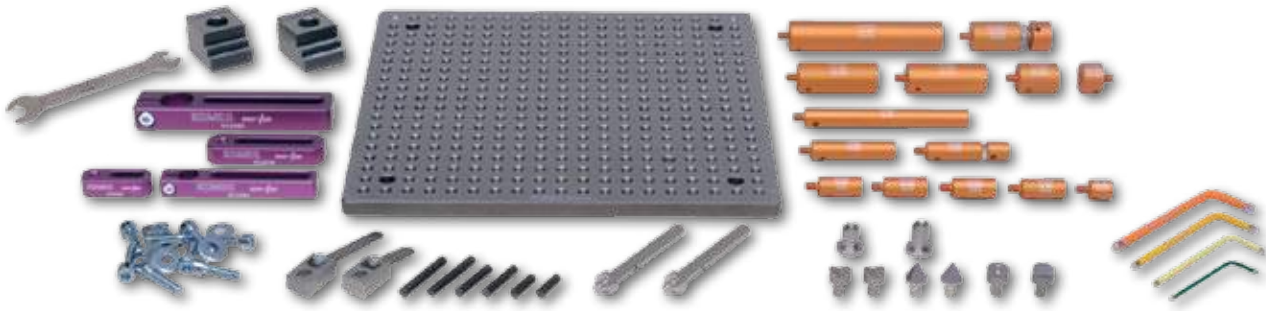
Mitutoyo Europe GmbH
Borsigstr. 8 -10
41469 Neuss
T +49 (0)2137 -102-0
F +49 (0)2137 -102-351
info@mitutoyo.eu
www.mitutoyo.eu

Note: Product illustrations are without obligation. Product descriptions, in particular any and all technical specifications, are only binding when explicitly agreed upon. MITUTOYO is either a registered trademark or a trademark of Mitutoyo Corp. in Japan and/or other countries/regions. opti-fix is a registered trademark of KOMEG Industrielle Meßtechnik GmbH. Other product, company and brand names mentioned herein are for identification purposes only and may be the trademarks of their respective holders.

MitutoyoShop

Mitutoyo

eco-fix Kit S

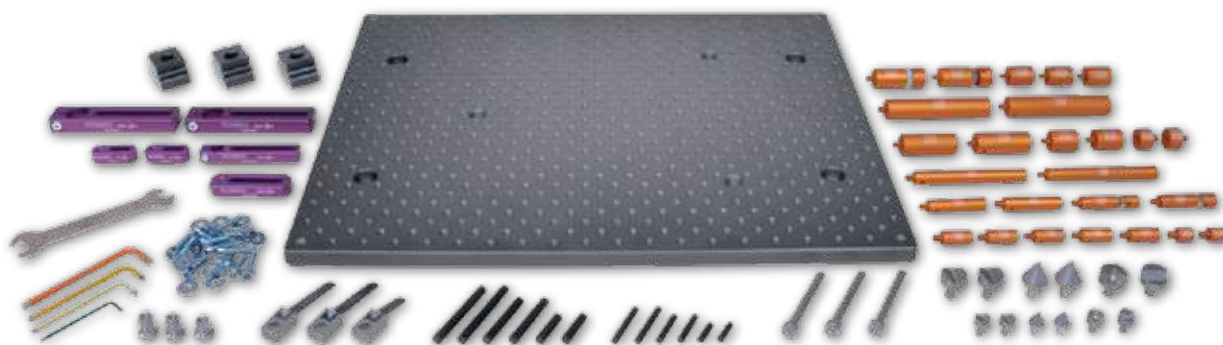


Part No. K551048

Part No.	Qty.	Part name
K551024	1	Location pin \varnothing 12 mm x 13 mm
K551025	1	Location pin \varnothing 12 mm x 25 mm
K551026	1	Location pin \varnothing 12 mm x 50 mm
K551027	1	Location pin \varnothing 12 mm x 100 mm
K551028	1	Location pin \varnothing 20 mm x 13 mm
K551029	1	Location pin \varnothing 20 mm x 25 mm
K551030	1	Location pin \varnothing 20 mm x 50 mm
K551031	1	Location pin \varnothing 20 mm x 100 mm
K551032	2	Clamping claw eco-fix
K551034	1	Base plate 250 mm x 250 mm
K551035	1	Receiver bracket small
K551036	1	Receiver bracket large
K551040	1	Adjustable location pin \varnothing 20 mm
K551041	1	Adjustable location pin \varnothing 12 mm
K551042	3	Location pin \varnothing 12 mm with bore 6 mm
K551044	1	Receiver bracket L = 90; \varnothing 12 mm
K551045	1	Receiver bracket L = 120; \varnothing 20 mm
K550716	2	Straight pin with thread
K550279	1	Spring clip, \varnothing 8 mm, L = 60 mm
K550554	1	Spring clip, \varnothing 8 mm, L = 40 mm
K550262	2	V-block mini
K550261	2	Cone receiver mini
K550250	1	Stopper element mini
K550247	1	Back square mini
K550888	2	Straight pin \varnothing 6 mm x 20 mm
K550889	2	Straight pin \varnothing 6 mm x 30 mm
K550890	2	Straight pin \varnothing 6 mm x 40 mm
K551046	1	Slotted nut for receiver bracket h = 12 mm
K551047	1	Slotted nut for receiver bracket h = 15 mm
K551050	1	Allen key 2 mm
K551051	1	Allen key 3 mm
K551052	1	Allen key 4 mm
K551053	1	Allen key 5 mm
K551504	1	Double open-ended spanner SW10
K550591	8	Washer \varnothing 6.4 mm x \varnothing 17 mm
K550110	6	Cylinder head screw M6 x 20
K550563	2	Cylinder head screw M6 x 25
	59	

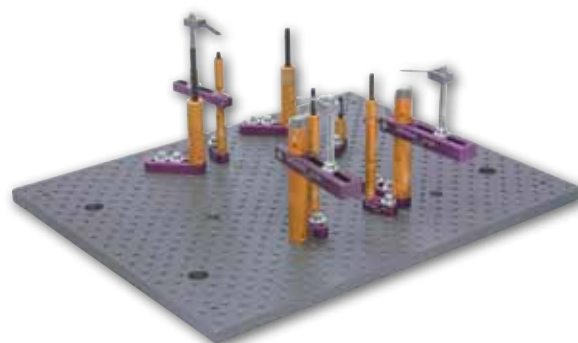


eco-fix Kit L



Part No. K551049

Part No.	Qty.	Part name
K551024	2	Location pin \varnothing 12 mm x 13 mm
K551025	2	Location pin \varnothing 12 mm x 25 mm
K551026	2	Location pin \varnothing 12 mm x 50 mm
K551027	2	Location pin \varnothing 12 mm x 100 mm
K551028	2	Location pin \varnothing 20 mm x 13 mm
K551029	2	Location pin \varnothing 20 mm x 25 mm
K551030	2	Location pin \varnothing 20 mm x 50 mm
K551031	2	Location pin \varnothing 20 mm x 100 mm
K551032	3	Clamping claw eco-fix
K551033	1	Base plate 500 mm x 400 mm
K551035	2	Receiver bracket small
K551036	1	Receiver bracket large
K551040	2	Adjustable location pin \varnothing 20 mm
K551041	2	Adjustable location pin \varnothing 12 mm
K551042	3	Location pin 12 mm with bore 6 mm
K551043	3	Location pin \varnothing 20 mm with bore 8 mm
K551044	1	Receiver bracket L = 90 mm, \varnothing 12 mm
K551045	2	Receiver bracket L = 120 mm, \varnothing 20 mm
K550716	3	Straight pin with thread
K550279	2	Spring clip, \varnothing 8 mm, L = 60 mm
K550554	1	Spring clip, \varnothing 8 mm, L = 40 mm
K550262	2	V-Block mini
K550261	2	Cone receiver mini
K550250	1	Stopper element mini
K550247	1	Back square mini
K550058	2	V-block
K550365	2	Cone Receiver
K550982	1	Stopper element
K550248	1	Back square
K550888	2	Straight pin \varnothing 6 mm x 20 mm
K550889	2	Straight pin \varnothing 6 mm x 30 mm
K550890	2	Straight pin \varnothing 6 mm x 40 mm
K550000	2	Straight pin \varnothing 8 mm x 30 mm
K550001	2	Straight pin \varnothing 8 mm x 50 mm
K550002	2	Straight pin \varnothing 8 mm x 65 mm
K551046	1	Slotted nut for receiver bracket h = 12 mm
K551047	2	Slotted nut for receiver bracket h = 15 mm
K551050	1	Allen key 2 mm
K551051	1	Allen key 3 mm
K551052	1	Allen key 4 mm
K551053	1	Allen key 5 mm
K551504	1	Double open-ended spanner SW10
K550591	12	Washer D = 6.4 mm / D = 17 mm
K550110	6	Cylinder head screw M6 x 20 mm
K550563	6	Cylinder head screw M6 x 25 mm
	98	



MitutoyoShop

eco-fix Kit MAG-S



Part No. K551089

Part No.	Qty.	Part name
K551024	3	Location pin \varnothing 12 mm x 13 mm
K551025	3	Location pin \varnothing 12 mm x 25 mm
K551026	3	Location pin \varnothing 12 mm x 50 mm
K551027	3	Location pin \varnothing 12 mm x 100 mm
K551032	2	Clamping claw eco-fix
K551034	1	Base plate 250 mm x 250 mm
K551035	3	Receiver bracket small
K551041	3	Adjustable Location pin \varnothing 12 mm
K551042	3	Location pin \varnothing 12 mm with bore 6 mm
K551044	2	Receiver bracket L = 90 mm; \varnothing 12 mm
K550889	3	Straight pin \varnothing 6 mm x 30 mm
K551073	3	Magnetic receiver \varnothing 20 mm
K550890	3	Straight pin \varnothing 6 mm x 40 mm
K551046	2	Slotted nut for receiver bracket h = 12 mm
K551050	1	Allen key 2 mm
K551051	1	Allen key 3 mm
K551052	1	Allen key 4 mm
K551053	1	Allen key 5 mm
K551054	1	Double open-ended spanner SW 10-17
K550591	15	Washer D= 6.4 mm / D= 17 mm
K550110	10	Cylinder head screw M6 x 20 mm
K550563	5	Cylinder head screw M6 x 25 mm
	70	



eco-fix Kit MAG-L



Part No. K551090

Part No.	Qty.	Part name
K551028	3	Location pin ø 20 mm x 13 mm
K551029	3	Location pin ø 20 mm x 25 mm
K551030	3	Location pin ø 20 mm x 50 mm
K551031	3	Location pin ø 20 mm x 100 mm
K551032	3	Clamping claw eco-fix
K551033	1	Base plate 500 mm x 400 mm
K551036	3	Receiver bracket large
K551040	3	Adjustable Location pin ø 20 mm
K551043	3	Location pin ø 20 mm with bore 8 mm
K551045	2	Receiver bracket L = 120 mm; ø 20 mm
K551074	3	Magnetic receiver ø 20 mm
K550000	3	Straight pin ø 8 mm x 30 mm
K550001	3	Straight pin ø 8 mm x 50 mm
K551050	1	Allen key 2 mm
K551051	1	Allen key 3 mm
K551052	1	Allen key 4 mm
K551053	1	Allen key 5 mm
K551054	1	Double open-ended spanner SW 10-17
K550591	20	Washer D= 6.4 mm / D= 17 mm
K550110	10	Cylinder head screw M6 x 20 mm
K550563	10	Cylinder head screw M6 x 25 mm
	79	

